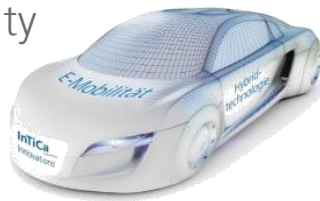
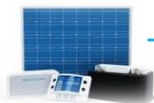


Future

E-Mobility



E-Solutions



InTiCa
Systems

E-Mobility & Hybrid Technology

Power Electronics for Inverters



Electrical Engine (stator coils)

On Board Charger



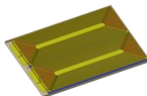
Filters



Battery-Management



Inductive Loading



InTiCa
Systems

Development of Automobile Technology

Automotive Products Segments

E-Mobility Hybrid Technology

stator coils for
hybrid technology



inductive loading



power transformer for
hybrid technology

power choke for
hybrid technology



planar transformer for
hybrid technology



Actuator Engineering

actuator for diesel
injection



valve for fuel injection



solenoid



actuator for electro
hydraulic steering
systems



Driving and Access Authorization Systems

keyless entry antenna with
or without cable



transponder system /
immobilizer



InTiCa
Systems

Development of Automobile Technology

Automotive Fields of Competencies
(Development, industrialization, production)



Energy and engine management



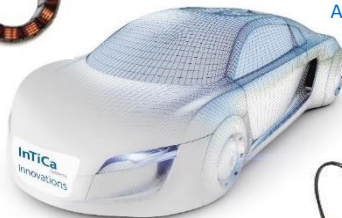
Stator systems



Actuators



HF antennas for TPM



EMC filter



Unit control for hybrid vehicles



Driver authorization systems



Keyless entry systems

InTiCa
Systems

Development of Industrial Engineering

Industrial Electronics Product Segments

Inverter (photovoltaic)

AC-filter choke



AC-boost choke



inductive modules



Actuator engineering

valve coils for flow diving



Automation, Drive System Technology

boost choke
storage choke



InTiCa
Systems

Development of Industrial Engineering

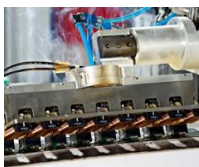
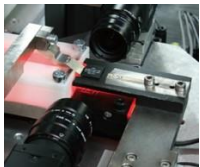
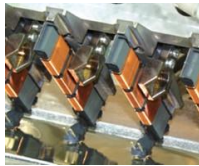
Industrial Electronics Product Segments



measurement and control technology

InTiCa
Systems

Manufacturing technology



Company profile - sites



Plant Silao (MX)



Headquarter Passau (GER)



Technology Center Passau (GER)



Plant Prachatice (CZ)



InTiCa
Systems